

DOCUMENT SCAN CONTROL SHEET

Document ID 524041

2 LABELS (8 OZ, 2 LBS)

EPA Reg # 499-370

Product Name PRESCRIPTION TREATMENT BRAND ADVANCE GRANULAR
CARPENTER ANT BAIT

Accepted Date 9/17/2010

Document Type PRILAB

Registration ID 33217

ACCEPTED
VIA NOTIFICATION
LABEL NOT REVIEWED

SEP 17 2010

New York State Department
of Environmental Conservation
Division of Solid & Hazardous Materials
Pesticide Product Registration

Doc ID: 524041

Prescription Treatment[®] brand

ADVANCE[®]

Granular

Carpenter Ant Bait

KILLS: Carpenter Ants and many common varieties of ants such as Acrobat, Argentine, Bigheaded, Crazy, Field, Fire, Harvester, Lasius, Little Black, Pavement, Pharaoh, Odorous House and Thief Ants

FOR USE IN AND AROUND: Homes, Residential Areas, Commercial and Other Structures, Non-Food/Feed Areas of Commercial Buildings, Warehouses, Hotels, Food Storage Areas, Inedible Product Areas of Meat Packing Plants, Motels, Schools, Supermarkets, Non-Occupied Patient Areas of Hospitals and Nursing Homes, Golf Courses, Parks, Lawns and Turf

ACTIVE INGREDIENT:

Abamectin* B₁ 0.011%

OTHER INGREDIENTS: 99.989%

* U.S. Pat. 4,310,519

TOTAL: 100.000%

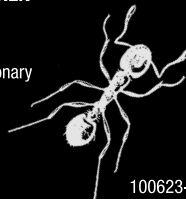
EPA Reg. No. 499-370 EPA Est. No. 7969-M0-1

KEEP OUT OF REACH OF CHILDREN

CAUTION

See back panel for First Aid, Precautionary
Statements, Directions for Use
and Storage and Disposal.

NET WEIGHT: 8 oz



81040295

100623-74

ADVANCE® Carpenter Ant Bait

FIRST AID

IF SWALLOWED: Call a poison control center or doctor immediately for treatment advice. Have person sip a glass of water if able to swallow. Do not induce vomiting unless told to do so by the poison control center or doctor. Do not give anything by mouth to an unconscious person.

IF ON SKIN OR CLOTHING: Take off contaminated clothing. Rinse skin immediately with plenty of water for 15 - 20 min. Call a poison control center or doctor for treatment advice.

IF IN EYES: Hold eyes open and rinse slowly and gently with water for 15 - 20 min. Remove contact lenses, if present, after the first 5 min, then continue rinsing eyes. Call a poison control center or doctor for treatment advice. Have the product container or label with you when calling a poison control center or doctor, or going for treatment. You may also contact 1-800-832-HELP for emergency medical treatment information.

PRECAUTIONARY STATEMENTS

HAZARDS TO HUMANS AND DOMESTIC ANIMALS
CAUTION: Harmful if swallowed or absorbed through the skin. Avoid breathing dust. Avoid contact with eyes, skin or clothing. Wash thoroughly with soap and water after handling. Do not contaminate kitchen utensils with this product. Pets may be attracted to this product.

ENVIRONMENTAL HAZARDS

This pesticide is toxic to fish and wildlife. Do not apply directly to water, to areas where surface water is present, or to intertidal areas below the mean high water mark. Do not contaminate water when disposing of equipment washwaters.

DIRECTIONS FOR USE

IT IS A VIOLATION OF FEDERAL LAW TO USE THIS PRODUCT IN A MANNER INCONSISTENT WITH ITS LABELING. This product is a ready-to-use product for use in controlling numerous ants both indoors and outdoors. This bait formulation combines a mixture of foods and the delayed-action insecticide, Abamectin. This insecticide acts to reduce the population of worker ants and can cause an immediate halt in egg production resulting in colony elimination. Avoid use of other insecticides or sprays on or near this product.

OUTDOORS

BROADCAST APPLICATION: Use this product at a rate of 8 oz/1/2 acre. Apply the product as uniformly as possible. Repeat application as necessary.

AROUND STRUCTURES: Lightly sprinkle the product evenly in a band approximately 1 - 2 ft wide around the foundation of the building. Treat visible trails with approximately 1 oz of product. Repeat application as necessary.

INDIVIDUAL COLONY TREATMENT: Use 1.5 - 3 oz of product per colony. Repeat application as necessary.

INDOORS

LOCATE ANT ACTIVITY: Follow ants back to voids. Apply product to cracks and crevices or voids where ants are active. In heavily traveled sites, use up to 1.5 oz of product. Use a large Centrobulo® puffer or other appropriate application device to place the product into crevices or voids. Repeat application as necessary. Do not use in the food/feed areas of food/feed handling establishments, restaurants or other areas where food is commercially prepared or processed. Do not use in serving areas while food is exposed or facility is in operation. Serving areas are defined as those areas where prepared foods are served, such as dining rooms, but excluding areas where foods may be prepared or held. Non-food areas are defined as areas such as garbage rooms, lavatories, floor drains (to sewers), entries and vestibules, offices, locker rooms, machine rooms, boiler rooms, garages, mop closets and storage (after canning or bottling). When applying this product in the home, all food processing surfaces and utensils should be covered during treatment or thoroughly washed before use. Exposed food should be covered or removed.

*Centrobulo - Registered trademark of the Centro Co.

STORAGE AND DISPOSAL

Do not contaminate water, food or feed by storage or disposal.

PESTICIDE STORAGE: Store in a cool, dry area. Always store pesticides in the original container. Store away from food and pet food.

PESTICIDE DISPOSAL: Waste resulting from use of this product may be disposed of on site or at an approved waste disposal facility.

CONTAINER DISPOSAL: Non-refillable container. Do not reuse or refill this container. **If empty:** Place in trash or offer for recycling if available. **If partly filled:** Call your local solid waste agency for disposal instructions.

Manufactured for:

Whitmire Micro-Gen Research Laboratories, Inc.®
by BASF Corporation

3568 Tree Court Industrial Blvd.

St. Louis MO 63122-6682

Questions? Call 1-800-777-8570

©2009 Whitmire Micro-Gen Research Laboratories, Inc.®

81040294

100623-74

ACCEPTED
VIA NOTIFICATION
LABEL NOT REVIEWED

SEP 17 2010

New York State Department
of Environmental Conservation
Division of Solid & Hazardous Materials
Pesticide Product Registration

Doc ID: 524041

Prescription Treatment[®] brand

ADVANCE[®]

Granular
Carpenter Ant Bait

KILLS: Carpenter Ants and many common varieties of household ants such as Acrobat, Argentine, Bigheaded, Crazy, Field, Fire, Harvester, Lasius, Little Black, Pavement, Pharaoh, Odorous House and Thief Ants

FOR USE IN AND AROUND: Homes, Residential Areas, Commercial and Other Structures, Non-Food/Feed Areas of Commercial Buildings, Warehouses, Hotels, Food Storage Areas, Inedible Product Areas of Meat Packing Plants, Motels, Schools, Supermarkets, and Non-Occupied Patient Areas of Hospitals and Nursing Homes, Golf Courses, Parks, Lawns and Turf

ACTIVE INGREDIENT:

Abamectin* B₁ 0.011%

OTHER INGREDIENTS: 99.989%

* U.S. Pat. 4,310,519

TOTAL: 100.000%

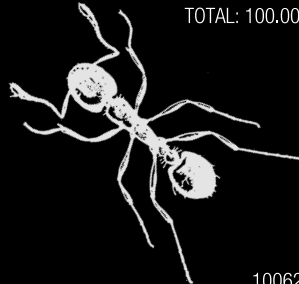
EPA Reg. No. 499-370 EPA Est. No. 7969-MO-1

KEEP OUT OF REACH OF CHILDREN

CAUTION

See back panel for First Aid, Precautionary Statements, Directions for Use and Storage and Disposal.

NET WEIGHT: 2 lbs



81040286

100623-74

ADVANCE[®] Carpenter Ant Bait

FIRST AID

IF SWALLOWED: Call a poison control center or doctor immediately for treatment advice. Have person sip a glass of water if able to swallow. Do not induce vomiting unless told to do so by the poison control center or doctor. Do not give anything by mouth to an unconscious person.

IF ON SKIN OR CLOTHING: Take off contaminated clothing. Rinse skin immediately with plenty of water for 15 - 20 min. Call a poison control center or doctor for treatment advice.

IF IN EYES: Hold eyes open and rinse slowly and gently with water for 15 - 20 min. Remove contact lenses, if present, after the first 5 min, then continue rinsing eyes. Call a poison control center or doctor for treatment advice. Have the product container or label with you when calling a poison control center or doctor, or going for treatment. You may also contact 1-800-832-HELP for emergency medical treatment information.

PRECAUTIONARY STATEMENTS

HAZARDS TO HUMANS AND DOMESTIC ANIMALS

CAUTION: Harmful if swallowed or absorbed through the skin. Avoid breathing dust. Avoid contact with eyes, skin or clothing. Wash thoroughly with soap and water after handling. Do not contaminate kitchen utensils with this product. Pets may be attracted to this product.

ENVIRONMENTAL HAZARDS

This pesticide is toxic to fish and wildlife. Do not apply directly to water, to areas where surface water is present, or to intertidal areas below the mean high water mark. Do not contaminate water when disposing of equipment washwaters.

DIRECTIONS FOR USE

IT IS A VIOLATION OF FEDERAL LAW TO USE THIS PRODUCT IN A MANNER INCONSISTENT WITH ITS LABELING.

This product is a ready-to-use product for use in controlling numerous ants both indoors and outdoors. This bait formulation combines a mixture of foods and the delayed action insecticide, Abamectin. This insecticide acts to reduce the population of worker ants and can cause an immediate halt in egg production resulting in colony elimination. Avoid use of other insecticides or sprays on or near this product.

OUTDOORS

BROADCAST APPLICATION: Use this product at a rate of 1 lb/acre. Apply the product as uniformly as possible. Repeat application as necessary.

AROUND STRUCTURES: Lightly sprinkle the product evenly in a band approximately 1 - 2 ft wide around the foundation of the building. Treat visible trails with approximately 1 oz of product. Repeat application as necessary.

INDIVIDUAL COLONY TREATMENT: Use 1.5 - 3 oz of product per colony. Repeat application as necessary.

INDOORS

LOCATE ANT ACTIVITY: Follow ants back to voids. Apply product to cracks and crevices or voids where ants are active. In heavily traveled sites, use up to 1.5 oz of product. Use a large Centrobulb* puffer or other appropriate application device to place the product into crevices or voids. Repeat application as necessary. Do not use in the food/feed areas of food/feed handling establishments, restaurants or other areas where food is commercially prepared or processed. Do not use in serving areas while food is exposed or facility is in operation. Serving areas are defined as those areas where prepared foods are served such as dining rooms but excluding areas where foods may be prepared or held. Non-food areas are defined as areas such as garbage rooms, lavatories, floor drains (to sewers), entries and vestibules, offices, locker rooms, machine rooms, boiler rooms, garages, mop closets and storage (after canning or bottling). When applying this product in the home, all food processing surfaces and utensils should be covered during treatment or thoroughly washed before use. Exposed food should be covered or removed.

*Centrobulb - Registered trademark of the Centro Co.

STORAGE AND DISPOSAL

Do not contaminate water, food or feed by storage or disposal.

PESTICIDE STORAGE: Store in a cool, dry area. Always store pesticides in the original container. Store away from food and pet food.

PESTICIDE DISPOSAL: Waste resulting from use of this product may be disposed of on site or at an approved waste disposal facility.

CONTAINER DISPOSAL: Non-refillable container. Do not reuse or refill this container. **If empty:** Place in trash or offer for recycling if available. **If partly filled:** Call your local solid waste agency for disposal instructions.

Manufactured for:
Whitmire Micro-Gen Research Laboratories, Inc.[®]
by BASF Corporation
3568 Tree Court Industrial Blvd.
St. Louis MO 63122-6682
Questions? call 1-800-777-8570

© 2009 Whitmire Micro-Gen Research Laboratories, Inc.[®]

81040285

100623-74